

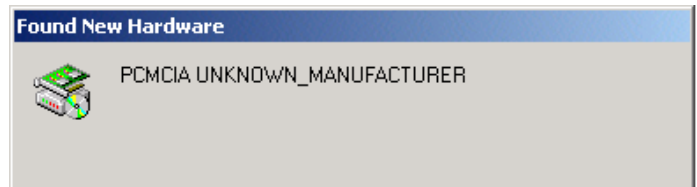
# Installation Procedure for PCMCIA SRAM Cards in Windows 2000

**IMPORTANT NOTE:** Windows 2000 might allocate a single resource to more than one device. Legacy devices that have fixed resource settings that are detected either during Windows Setup or through the Add/Remove Hardware wizard and certain circumstances might require users to change resource settings after Windows 2000 has configured a device.

Windows2000 does not completely support SRAM card devices because of the legacy device settings so the the following procedure may not work properly100% of the time due to conflicting device configurations on your system.

This procedure specifically covers installation of Panasonic PCMCIA SRAM cards with the model designation BN-xxxHSRC.

1. Insert the SRAM card into the PCMCIA slot on the PC.  
“PCMCIA UNKNOWN \_ MANUFACTURER” as shown on the right will appear.



2. Go to the “Found New Hardware Wizard” as shown on the right.



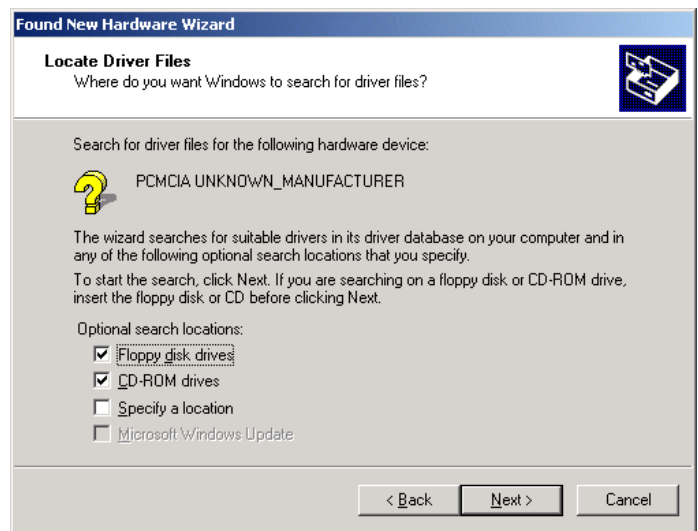
Go to “Next”.

3. Select the default setting that Windows recommends.  
“Search for a suitable driver for my device” should be selected.



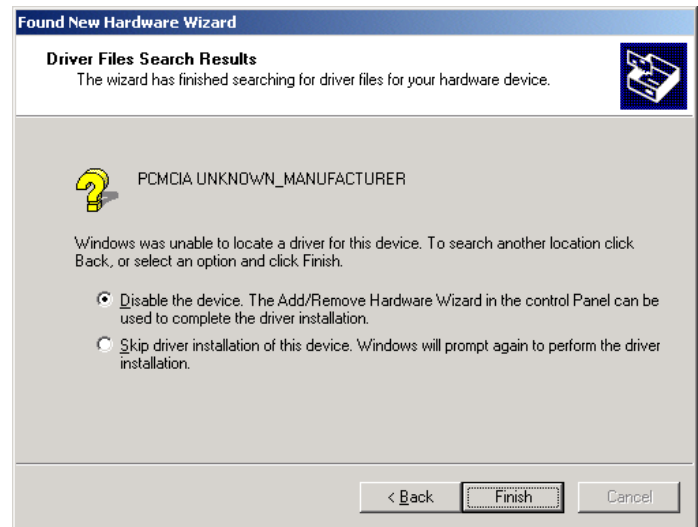
Go to “Next”.

4. The “Location Driver Files” window will appear as shown on the right. You do NOT need to change to any search locations. Use the Windows default settings.



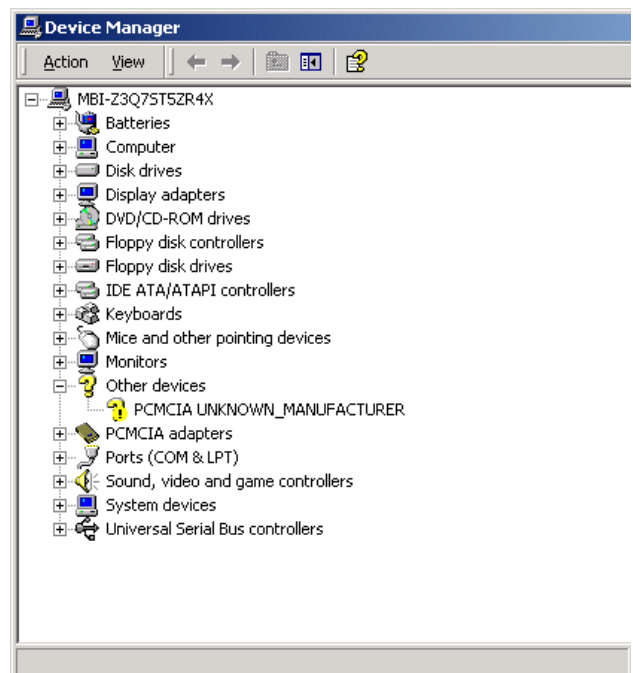
5. "Driver Files Search Results" will appear. Select "Disable the device. The Add/Remove Hardware Wizard in the control Panel can be used to complete the driver installation".

Then click Finish.

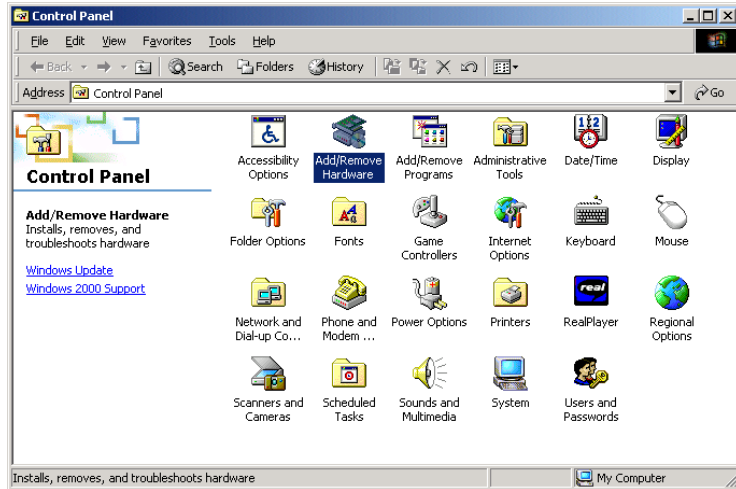


6. The aforementioned process can be used to install this SRAM card temporarily as a PCMCIA Unknown Device, however the installation process is not yet completed and the SRAM card will not work.

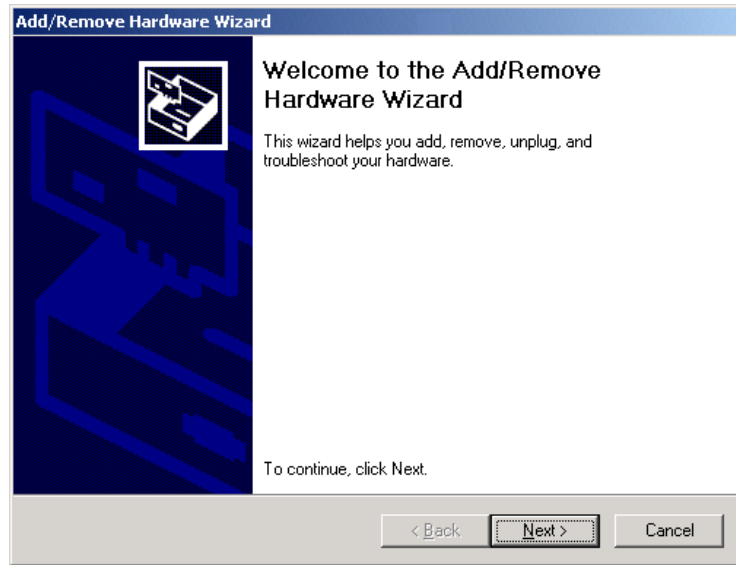
This can be confirmed by checking the Device Manager as shown to the right. (“?” appears next to the device)



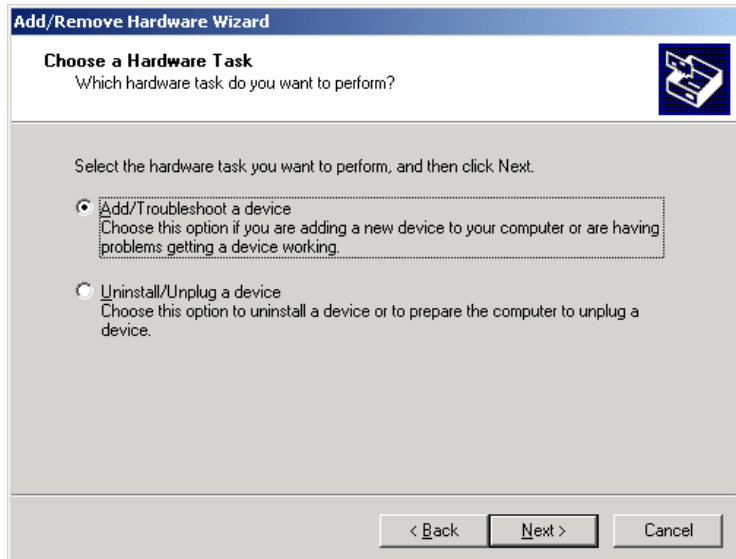
7. Because the SRAM card is still not working, the next step is to attempt to troubleshoot it. Please access “Add/Remove Hardware” in the Control Panel.



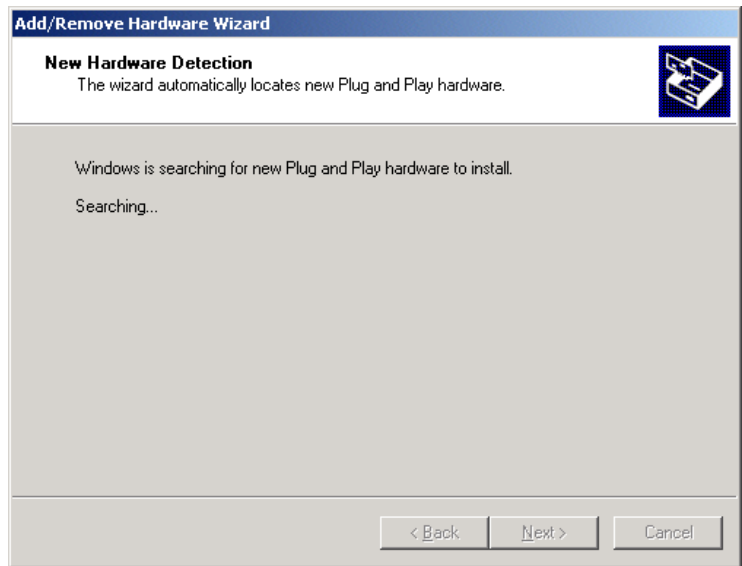
8. After accessing the “Add/Remove Hardware Wizard” please select “Next”.



9. Select “Add/Troubleshoot a device” Then go to “Next”.



10. Windows will search for the device that needs fixed/installed as shown on the right.



11. Select "PCMCIA UNKNOWN MANUFACTURER" from the list. Go to "Next".

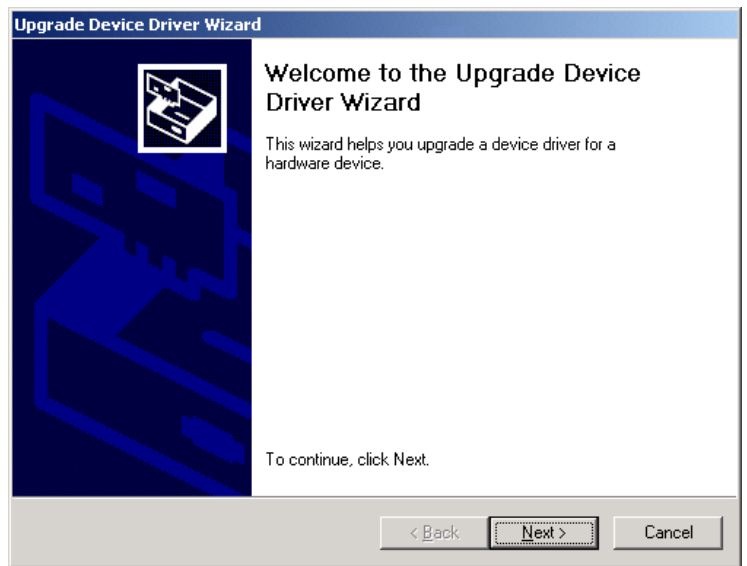


12. The "Completing the Add/Remove Hardware Wizard" screen will appear. Click "Finish".



13. After clicking “Finish” on the previous screen, the “Upgrade Device Driver Wizard” should appear.

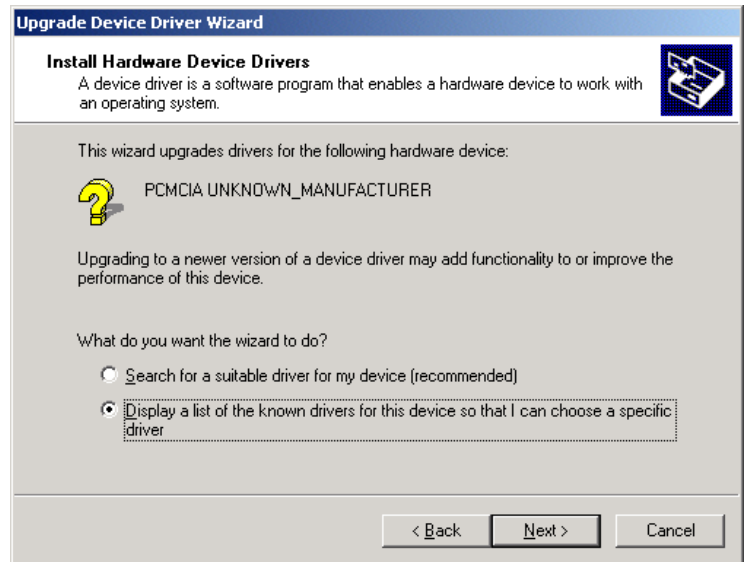
Go to Next.



14. Select “Display a list of the known drivers for the device so that I can choose a specific driver”.

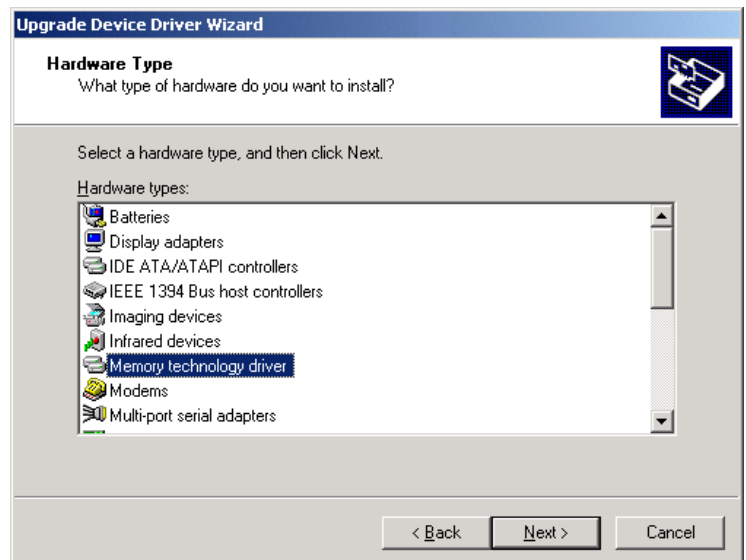
Note: This is not the default setting in Windows and must be selected.

Go to Next.



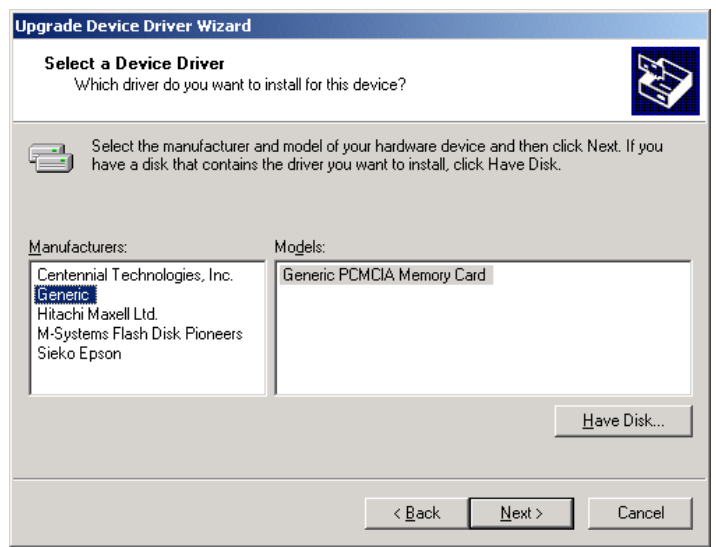
15. Select “Memory Technology Driver” from the device list.

Go to Next.

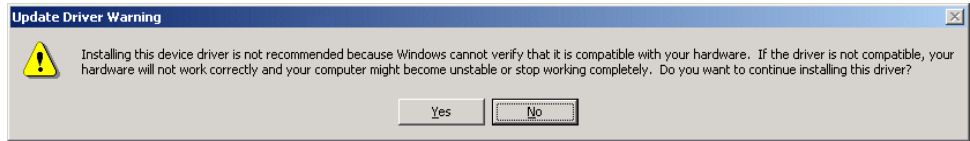


16. The “Manufacturers and Models” list will appear. Select “Generic”.

Go to Next.

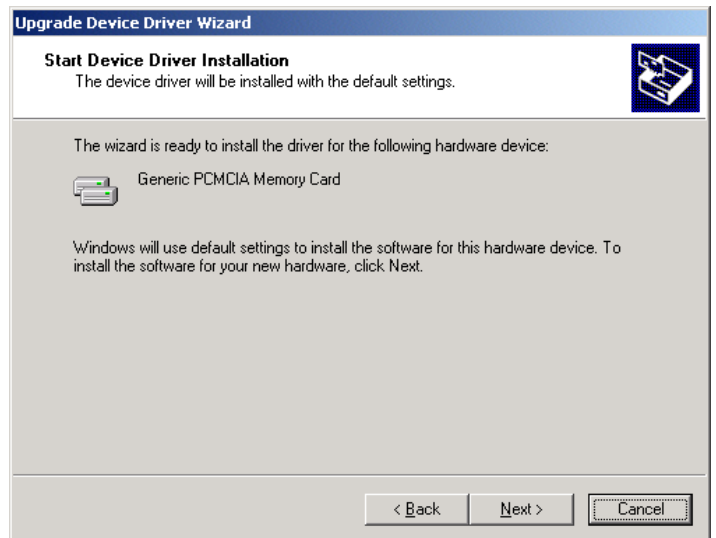


17. The following warning from Windows may appear. Please disregard it and click “Yes”.



18. Windows should begin to install the appropriate device driver as shown on the right.

Go to Next.



19. If the “Completing the Upgrade Device Driver Wizard” screen appears then you have successfully completed the driver installation.

